



**RIDGE VIEW
SECONDARY COLLEGE**

BELIEVE · ASPIRE · PRIDE

2023 ANNUAL REPORT



Contents

College overview	3
Student numbers	4
Workforce composition	5
Student attendance	6
Student achievement and progress	7
Year 7 NAPLAN	7
Year 9 NAPLAN	9
Year 10 OLNA	11
Year 11 OLNA	11
College priorities	12
Quality teaching, learning and assessment	12
Effective partnerships	13
Positive college culture	14
Financial summary	15
One line budget 2023	15
Income - Dec 2023	16
Expenditure - Dec 2023	17
Goods and services vs salary expenditure	18
Locally generated revenue - budget vs actual	18
Goods and services expenditure - budget vs actual	19

College overview

Founded in 2019, Ridge View Secondary College is a first-class state-of-the-art independent public school, located 45 km south of Perth in the suburb of Baldivis.

\$30.28m of Stage 2 upgrades were completed at the College in 2023. This significant investment increased the capacity of the College to 1,450 students. With Stage 2 complete, the College now boasts facilities that include a performing arts theatre, an auditorium, a commercial kitchen and additional classrooms for drama, dance, music, visual art, and media. Stage 2 enhanced the College's facilities offering which already included digital technologies and business studies laboratories, a fitness centre with multipurpose courts and a science area with 10 laboratories.

At Ridge View Secondary College, quality teaching and learning outcomes are at the forefront of all decision-making. All physical, human and financial resources have been prioritised to achieve the best outcomes for students. Through the high expectations and standards for teaching, students of all interests and abilities are guided towards their individual goals and encouraged to explore their potential.

Good citizenship, quality student leadership, student connection to the College along with a sense of belonging are closely associated with the College's positive culture. The College motto of "Believe, Aspire, Pride" and the College's core values "I can be a champion; We all matter; and We are family" are embedded into all aspects of college life for both staff and students and form the foundation for student wellbeing, pride and connection.

Ridge View Secondary College's aim is for all students to enjoy being at school and to feel as though they are part of a supportive community where good citizenship is a responsibility of all.

Students are encouraged to take advantage of extracurricular opportunities while enhancing and broadening their learning so that they can develop character, leadership skills and college pride.

Ridge View Secondary College's Vision is to be an exceptionally successful secondary college, which is a source of pride for the entire community. To be a college that works in partnership with parents and the broader community in guiding, educating, fostering self-belief and inspiring our students to achieve their dreams.

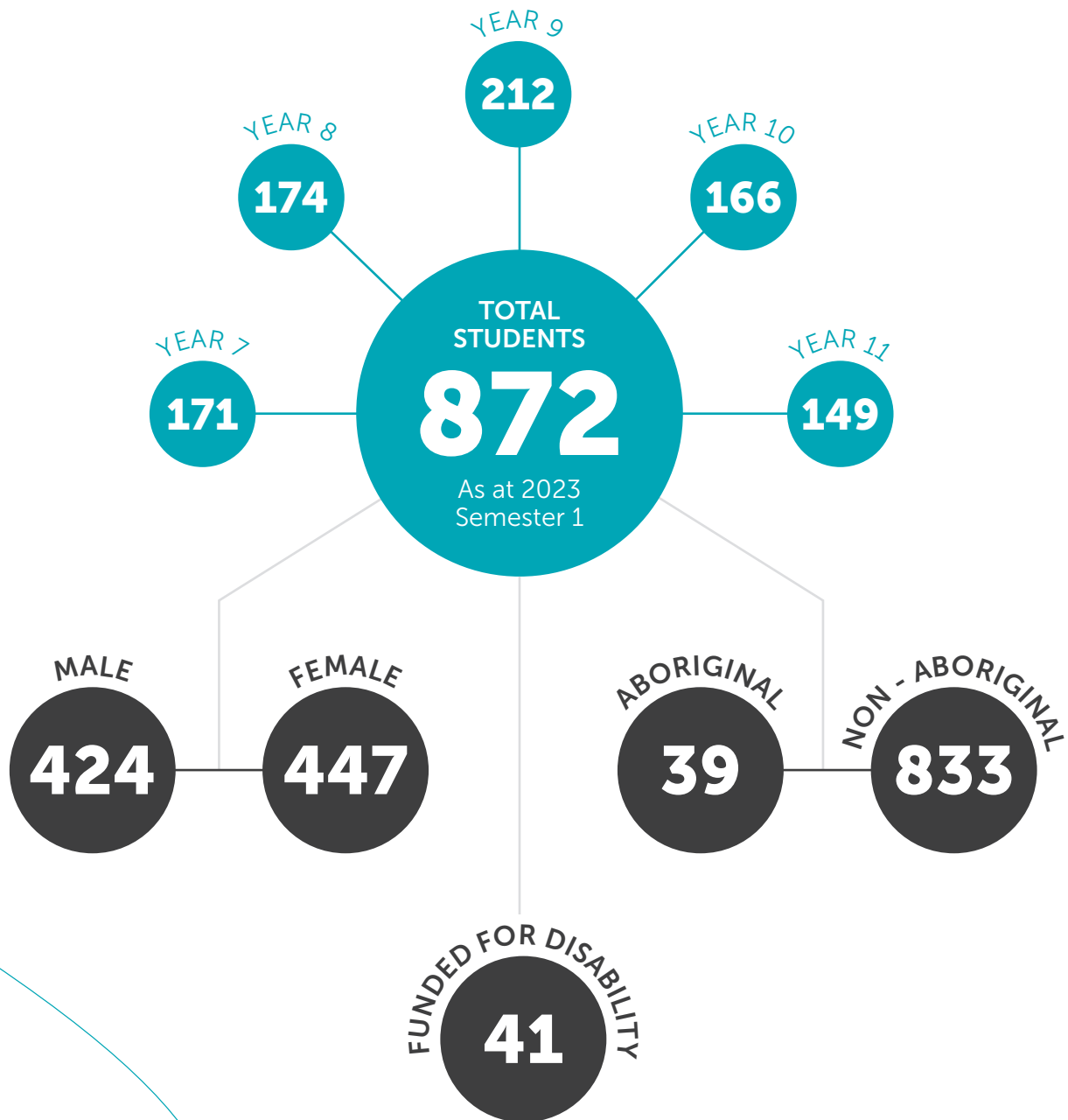
Every student matters at Ridge View Secondary College.

Student numbers and characteristics

(data) (as at 2023 Semester 1)

(Source: Schools Online)

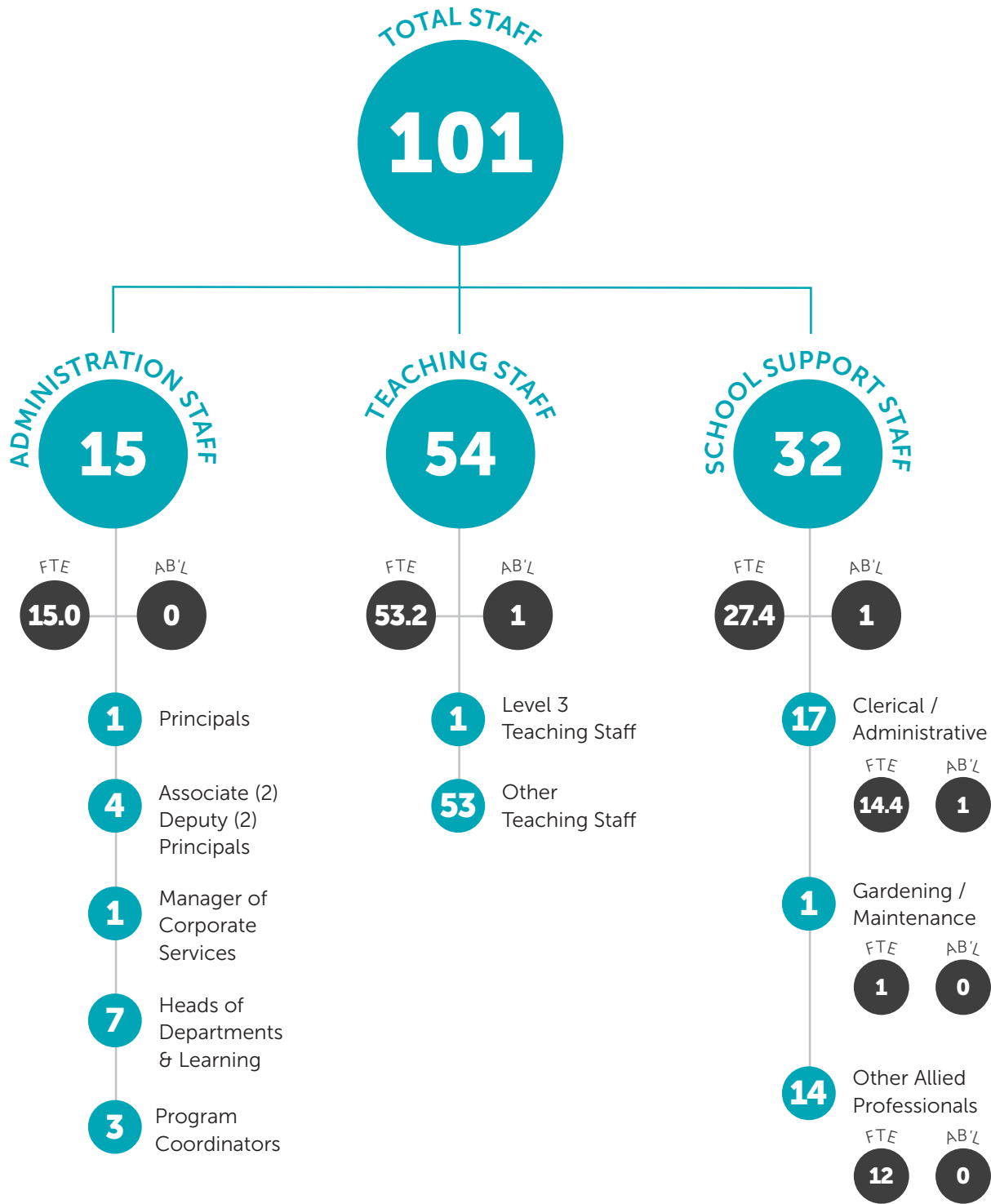
Enrolments increase every year until 2024 when the college has year 7-12 cohorts. Currently each cohort is between 170 and 220 students, but it is anticipated that the college will reach 1450 students in the next few years due to new developments in the local area.



Workforce composition (data)

(Source: Schools Online)

All appointments are made as a result of thorough workforce planning. The college's salary expenditure was within total student funding. Despite teacher shortages, Ridge View Secondary College was able to attract sufficient new staff for 2024.



Student attendance (data)

(Source: Schools Online)

During 2023, attendance rates were similar to like schools and WA public schools. We are finding that attendance rates continue to be less than they were during pre-covid years. In the most recent business plan, the college is focussed on improving the percentage of students in the regular attendance band i.e Indicated to Regular.

	Non - Aboriginal			Aboriginal			Total		
	School	Like Schools	WA Public Schools	School	Like Schools	WA Public Schools	School	Like Schools	WA Public Schools
2021	87.1%	85.9%	86.5%	78.8%	73.2%	62.6%	86.8%	85.4%	84.4%
2022	85.2%	81.7%	83.0%	72.3%	70.0%	55.2%	84.8%	81.1%	80.4%
2023	82.6%	84.2%	84.9%	70.5%	68.0%	59.2%	82.1%	83.3%	82.5%

	Attendance Category			
	Regular	At Risk		
		Indicated	Moderate	Severe
2021	49.2%	32.4%	13.9%	4.5%
2022	45.4%	27.6%	19.8%	7.1%
2023	36.1%	31.8%	22.0%	10.1%
Like Schools 2023	44.6%	27.7%	18.1%	9.6%
WA Public Schools 2023	47.0%	26.0%	16.0%	11.0%

Student achievement and progress

(Source: Schools Online)

Year 7 NAPLAN results serve as a benchmark for improvement as students have only attended secondary school for less than one term prior to testing. The college's Year 7 results are shared and discussed with partner primary schools to address targeted improvements e.g. Numeracy.

There is no available long-term progress data available for Year 9 NAPLAN. The NAPLAN achievement results for year 7 and 9 was comparable to similar schools while Reading is an area for focus in 2024.

Year 7 - NAPLAN (data) (Source: Schools Online)

WA Public Schools	Year 7 Numeracy					
	School			Like Schools		
	2021	2022	2023	2021	2022	2023
Top 20%	9%	6%	7%	12%	12%	14%
Middle 60%	71%	67%	74%	67%	67%	68%
Bottom 20%	20%	26%	19%	21%	20%	18%

WA Public Schools	Year 7 Reading					
	School			Like Schools		
	2021	2022	2023	2021	2022	2023
Top 20%	12%	9%	10%	13%	14%	15%
Middle 60%	69%	70%	65%	68%	66%	67%
Bottom 20%	19%	21%	25%	19%	20%	18%

Year 7 - NAPLAN (data) (Source: Schools Online)

WA Public Schools	Year 7 Writing					
	School			Like Schools		
	2021	2022	2023	2021	2022	2023
Top 20%	14%	10%	18%	17%	16%	20%
Middle 60%	68%	68%	63%	66%	68%	66%
Bottom 20%	18%	22%	20%	17%	17%	15%

WA Public Schools	Year 7 Spelling					
	School			Like Schools		
	2021	2022	2023	2021	2022	2023
Top 20%	9%	11%	12%	14%	14%	15%
Middle 60%	69%	71%	66%	65%	64%	65%
Bottom 20%	22%	18%	23%	22%	22%	19%

WA Public Schools	Year 7 Grammar & Punctuation					
	School			Like Schools		
	2021	2022	2023	2021	2022	2023
Top 20%	12%	11%	14%	14%	14%	15%
Middle 60%	67%	67%	65%	65%	66%	67%
Bottom 20%	20%	22%	22%	21%	20%	18%

Year 9 - NAPLAN (data) (Source: Schools Online)

WA Public Schools	Year 9 Numeracy					
	School			Like Schools		
	2021	2022	2023	2021	2022	2023
Top 20%	13%	6%	10%	10%	10%	12%
Middle 60%	66%	70%	66%	69%	68%	66%
Bottom 20%	21%	24%	24%	21%	21%	22%

WA Public Schools	Year 9 Reading					
	School			Like Schools		
	2021	2022	2023	2021	2022	2023
Top 20%	20%	11%	13%	14%	13%	14%
Middle 60%	55%	61%	64%	64%	66%	64%
Bottom 20%	25%	28%	24%	21%	20%	22%

WA Public Schools	Year 9 Writing					
	School			Like Schools		
	2021	2022	2023	2021	2022	2023
Top 20%	18%	14%	14%	14%	18%	15%
Middle 60%	59%	64%	67%	63%	65%	65%
Bottom 20%	23%	23%	19%	23%	18%	20%

Year 9 - NAPLAN (data) (Source: Schools Online)

WA Public Schools	Year 9 Spelling					
	School			Like Schools		
	2021	2022	2023	2021	2022	2023
Top 20%	8%	10%	10%	14%	13%	15%
Middle 60%	70%	71%	68%	65%	68%	63%
Bottom 20%	22%	19%	22%	21%	19%	22%

WA Public Schools	Year 9 Grammar & Punctuation					
	School			Like Schools		
	2021	2022	2023	2021	2022	2023
Top 20%	15%	10%	14%	16%	17%	15%
Middle 60%	57%	72%	62%	63%	64%	64%
Bottom 20%	28%	18%	24%	21%	19%	22%

OLNA

The 2023 OLNA results compare similarly with like schools for years 10 and 11. As a pass in all tests in OLNA is needed for the WACE, support programs are planned in 2024 to assist those students in Year 12 who are yet to pass. The aim is to have above 95% of Year 12 students pass the OLNA.

Year 10 - OLNA (data)

Year 10 Reading		
After Round 2		
Total number of students	159	%
Cat 1	6	3.77
Cat 2	34	21.38
NSA	0	0
Total need to sit again	40	25.16
Cat 3	119	74.84

Year 11 - OLNA (data)

Year 11 Reading		
After Round 2		
Total number of students	123	%
Cat 1	1	1.23
Cat 2	11	8.94
NSA	1	1.23
Total need to sit again	13	10.57
Cat 3	110	89.43

Year 10 Writing		
After Round 2		
Total number of students	159	%
Cat 1	9	5.66
Cat 2	30	18.87
NSA	2	3.18
Total need to sit again	41	25.79
Cat 3	118	74.21

Year 11 Writing		
After Round 2		
Total number of students	123	%
Cat 1	1	1.23
Cat 2	15	12.2
NSA	1	1.23
Total need to sit again	17	13.82
Cat 3	106	86.18

Year 10 Numeracy		
After Round 2		
Total number of students	159	%
Cat 1	3	4.77
Cat 2	46	28.93
NSA	0	0
Total need to sit again	49	30.82
Cat 3	110	69.18

Year 11 Numeracy		
After Round 2		
Total number of students	123	%
Cat 1	2	2.46
Cat 2	15	12.2
NSA	1	1.23
Total need to sit again	18	14.63
Cat 3	105	85.37

College priorities

Identified school priority:	
Quality Teaching, Learning and Assessment	
Progress against priority:	Planned actions:
<ul style="list-style-type: none"> School-wide beliefs about effective teaching are understood, accepted and are an integral part of planning, teaching and assessment. High expectations and standards for teaching, learning and assessment have been well established and are a recognised characteristic of the college. Staff are encouraged to make evidence-based decisions as part of the teaching and review cycle through use of available data and ongoing formative assessments. Performance Development processes are aligned with Business Plan and school-wide directions and link with AITSL Australian Professional Standards for Teachers. College development days, whole college staff meetings and learning area meetings are aligned to school priorities, provide professional learning, and enable moderation, collaborative planning and sharing of resources. Staff exercise professional judgments about the full range of learning, teaching and assessment programs that will meet the learning needs of all students 	<p>Our school supports the following action/s:</p> <ul style="list-style-type: none"> The implementation of a successful senior school pathway that meets students and community needs. Courses are effectively planned, implemented and reviewed, ensuring both compliance and student achievement. The transition to year 12 in 2024 is effectively planned and implemented. Continue to embed culturally responsive approaches and Aboriginal perspectives into the classroom. Provide educational opportunities to support staff to develop in this area and improve understanding of local context. Developing the knowledge and skills of staff in using evidence and data to reflect upon their practice and to plan for their professional growth. Support staff in the use of data as part of the teaching and review cycle. To further develop our peer observation programs and instructional coaching program to support teachers develop their practice. Maintain ongoing professional development and training targeting common teaching and learning frameworks, High Impact Teaching Strategies (including TeachWell focus) and embedded formative assessment. Continuing development of the Academic Pathway and respond to the review conducted in 2022. Cross-curricular content mapping to support whole of college curriculum planning

College priorities - *Continued*

Identified school priority:	
Effective Partnerships	
Progress against priority:	Planned actions:
<ul style="list-style-type: none"> Partnerships with local primary schools and schools in the Karnup Network remain strong and productive and focussed on collaboration. Effective partnerships are established and developed with local government, community, agencies, tertiary providers, TAFE, RTOs, business and industry. The College Board is trained, active, informed and effective in governance and support of the college. Culturally responsive practices with Aboriginal students, their families and communities are valued and implemented. Parent and carer satisfaction feedback is sought and acted on. 	<ul style="list-style-type: none"> Forming strong partnerships with the local primary schools. Promoting a broader and longer term view of transition support and promoting the alignment of processes and sharing of data. Developing student leadership e.g. influence and voice. Developing community partnerships with support agencies, local business, industry and community groups. Developing stronger links with tertiary providers, including TAFE. Enhancing connections with local Aboriginal Elders and further development of the cultural plan.

College priorities - *Continued*

Identified school priority:	
Positive College Culture	
Progress against priority:	Planned actions:
<p>Our school validates the following:</p> <ul style="list-style-type: none"> • A positive college culture is evident. Students feel connected, safe, and supported. • The college motto and values are embedded into practice and is being increasingly promoted by students. • The college climate is orderly, inclusive, and respectful. • Cultural responsiveness is increasing, and the college utilises the Aboriginal Cultural Standards Framework as a guide. • All staff consider themselves to be pastoral carers and student wellbeing and support providers. • Students at educational risk are effectively identified, referred for support and intervention plans are developed with students and parents. • The Ridge View Roadmap to Classroom Success is applied by staff and acknowledged by students. • Effective wellbeing, support and intervention structures and processes are in place and are sustainable. • The House System contributes to college climate and the student support process. • Students are given opportunities for leadership and voice through House Captains, ARTS, Sports, Culture and Diversity leadership roles. • Whole school student voice is fostered through every staff member engaging in PIVOT to provide opportunities for their students to offer valuable feedback. • Good Standing is maintained by 90% of students, while 50% of students achieve Advanced Standing. • Student engagement is generally high, and most students regularly demonstrate positive behaviours. 	<p>Our school supports the following action/s:</p> <ul style="list-style-type: none"> • Strengthen the Good Standing Policy and processes by providing more incentive to maintain Good Standing and progress to Advanced Standing. • Further emphasis on the House System as an ongoing and developing student wellbeing and support system. • Provide further opportunities for student leadership and foster voice across the college. • Continually plan and refine student wellbeing and support services that are sustainable and targeted towards student needs, while remaining within the realistic and accepted role of schools. Guided by a responsive SWAE Strategic Plan. • Continue to embed the core values captured within the college motto and beliefs. The values will need to be highly visible and referred often. Drive to come from students as well as staff. • Maintain the positive reputation for professionalism, excellence, quality education, high student support and client service.

Financial summary (as at 31 December 2023)

One Line Budget - Dec 2023 *(Verified Dec Cash)*

	Current Budget (\$)	Actual YTD (\$)
Carry Forward (Cash):	275,905	275,905
Carry Forward (Salary):	275,361	275,361

Income

Student-Centred Funding (including Transfers & Adjustments):	11,176,109	11,176,109
Locally Raised Funds:	655,944	570,960
Total Funds:	12,383,319	12,298,335

Expenditure

Salaries:	10,298,507	10,298,507
Goods and Services (Cash):	1,704,444	1,727,518
Total Expenditure:	12,002,952	12,026,025

Variance:	380,368	272,310
------------------	----------------	----------------

Financial summary - Continued

Income - Dec 2023 (Verified Dec Cash)

	Current Budget (\$)	Actual YTD (\$)
Carry Forward (Cash):	275,905	275,905
Carry Forward (Salary):	275,361	275,361

Student-Centred Funding

Per Student	8,862,866	8,862,866
School and Student Characteristics	1,881,587	1,881,587
Disability Adjustments	90,832	90,832
Targeted Initiatives	405,431	405,431
Operational Response Allocation	25	25
Total Funds:	11,240,741	11,240,741

Transfers and Adjustments

Regional Allocation	12,000	12,000
Transition Adjustment	0	0
School Transfers – Salary	(1,045,270)	(1,045,270)
School Transfers - Cash	999,066	999,066
Department Adjustments	(30,427)	(30,427)
Total Funds:	(64,631)	(64,631)

Locally Raised Funds (Revenue)

Voluntary Contributions	97,727	51,714
Charges and Fees	144,781	122,537
Fees from Facilities Hire	1,500	1,364
Fundraising/Donations/Sponsorships	28,599	25,949
Commonwealth Govt Revenues	0	0
Other State Govt/Local Govt Revenues	0	0
Revenue from CO, Regional Office and Other schools	22,464	22,464
Other Revenues	51,377	57,482
Transfer from Reserve or DGR	309,496	289,451
Residential Accommodation	0	0
Farm Revenue (Ag and Farm Schools only)	0	0
Camp School Fees (Camp Schools only)	0	0
Total Funds:	655,944	570,961

TOTAL	12,383,320	12,298,337
--------------	-------------------	-------------------

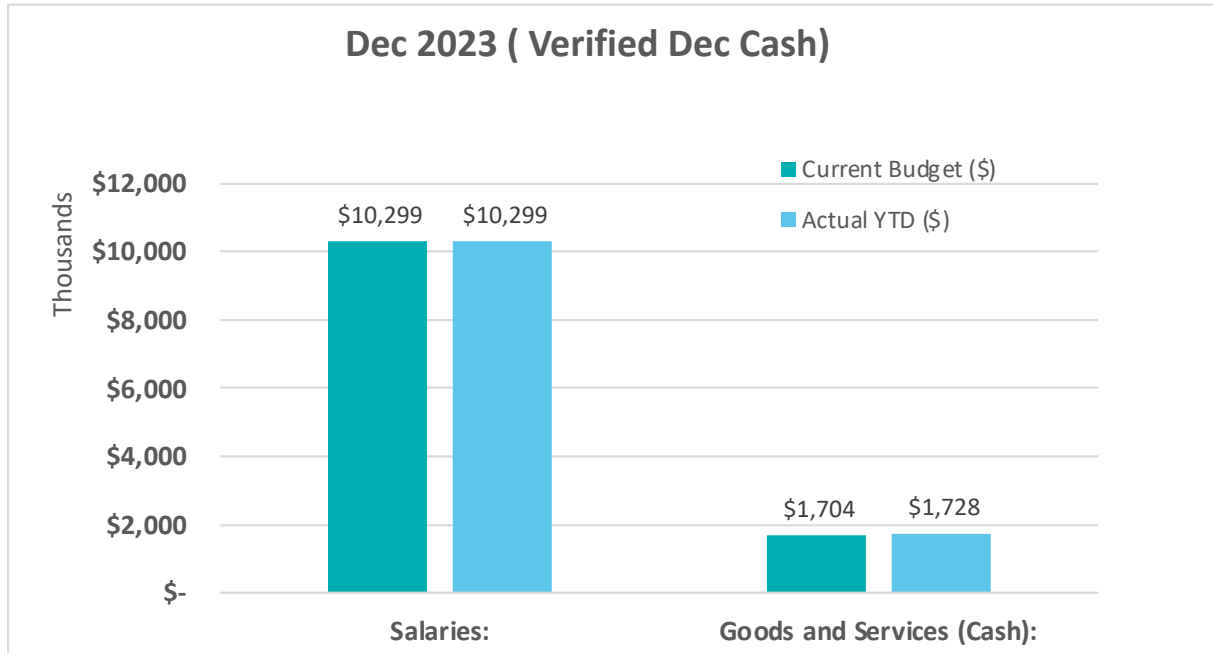
Financial summary - Continued

Expenditure - Dec 2023 (Verified Dec Cash)

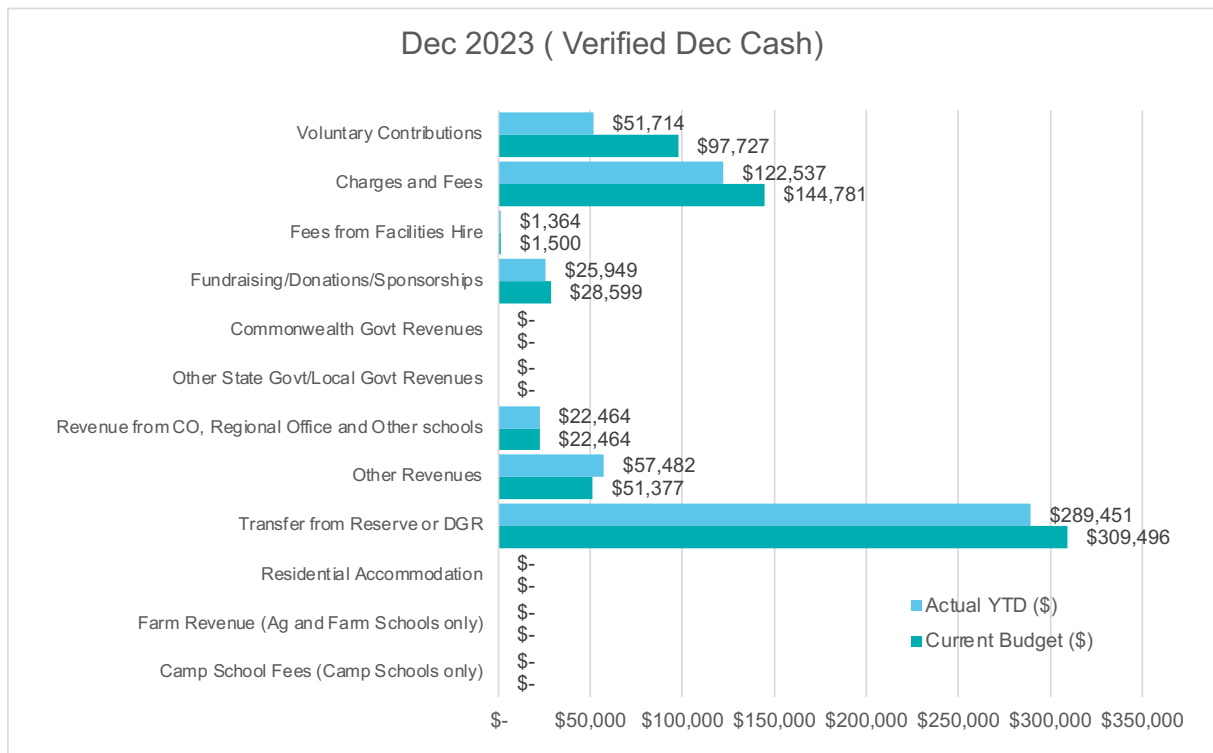
	Current Budget (\$)	Actual YTD (\$)
Salaries		
Appointed Staff	9,634,503	9,634,503
New Appointments	0	0
Casual Payments	606,461	606,461
Other Salary Expenditure	57,543	57,543
Total Funds:	10,298,507	10,298,507
Goods and Services (Cash Expenditure)		
Administration	91,543	114,427
Lease Payments	183,500	186,336
Utilities, Facilities and Maintenance	274,145	313,561
Buildings, Property and Equipment	506,463	519,056
Curriculum and Student Services	402,893	344,028
Professional Development	31,000	37,588
Transfer to Reserve	198,000	198,000
Other Expenditure	16,900	14,522
Payment to CO, Regional Office and Other schools	0	0
Residential Operations	0	0
Residential Boarding Fees to CO (Ag Colleges only)	0	0
Farm Operations (Ag and Farm Schools only)	0	0
Farm Revenue to CO (Ag and Farm Schools only)	0	0
Camp School Fees to CO (Camp Schools only)	0	0
Total Funds:	1,704,444	1,727,518
TOTAL	12,002,951	12,026,025

Financial summary - Continued

Goods and Services vs Salary Expenditure

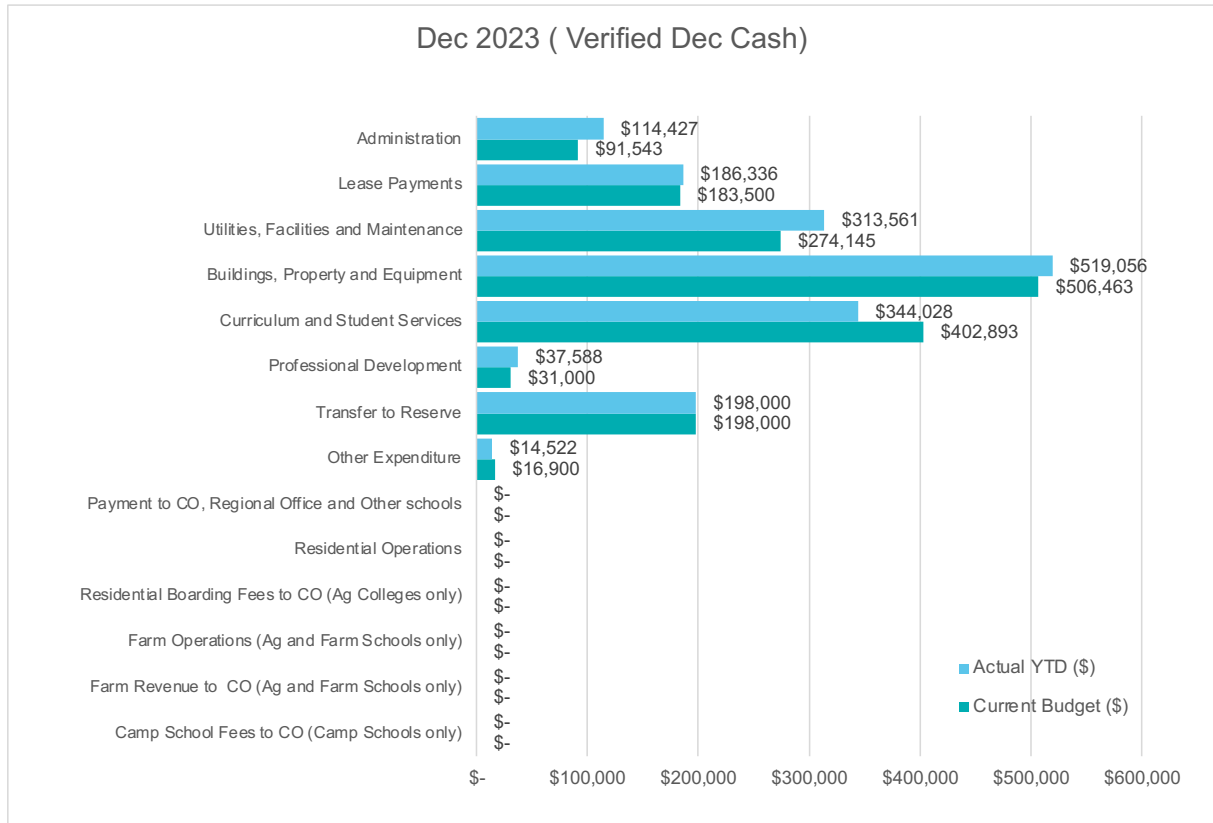


Locally Generated Revenue - Budget vs Actual



Financial summary - Continued

Goods and Services Expenditure - Budget vs Actual





RIDGE VIEW
SECONDARY COLLEGE
BELIEVE · ASPIRE · PRIDE

P 08 9553 0700

E ridgeview.sc@education.wa.edu.au

A 359 Sixty Eight Road, Baldivis WA 6171
ridgeviewsc.wa.edu.au